

# CONSERVATION NEWS

MERCER COUNTY SOIL CONSERVATION DISTRICT  
1400 Hwy 49 N #102, Beulah, ND 58523  
www.mercercountyscd.org

## 2019 ACHIEVEMENT WINNER ROBERT & MARLENE SCHRIEFER



Robert & Marlene Schriever have been ranching in Western Mercer County since 1936. The Schriever's feel conservation has been vital to the success and sustainability of their operation.

They have installed numerous conservation practices throughout the years including several miles of cross-fencing, pipelines and water systems, field and farmstead windbreaks, grass seeding and ponds. They are proud of their efforts to keep cover on the ground to maintain and improve soil health.

Living and working on a multi-generational operation gives them the opportunity to continually be learning and trying new practices to improve productivity and the health of the landscape. They attribute the success of the operation in part to the conservation practices that have been adopted and installed over the years. These efforts have built a solid foundation for the 4th and 5th generations who now call the ranch home.



### Mercer County Soil Conservation District 2019 Board of Supervisors

Gerald Bauman Chairman  
Golden Valley

Marc Schriever, Vice-Chairman  
Golden Valley

Janet Connolly  
Golden Valley

Jeff Ellwein  
Pick City

Wayne Windhorst  
Stanton

#### SCD Staff

Sarah Tunge, District Manager

Brian Kerns, Watershed  
Coordinator/District Tech

Mark Johannes, District Tech/  
Watershed

#### NRCS Staff

Lori Klein, District Conservationist

Pedro Cruz-Carballo, Soil  
Conservationist



Mercer County Soil  
Conservation District



# Bakken Development and Working Lands Program (BDWLP)

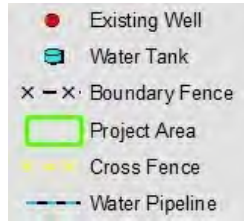
*FOR:*

## **LANDOWNERS in oil-producing counties**

- ◆ Assistance with:
  - ◇ Developing prescribed grazing strategies.
  - ◇ Recommendations for cover crops well-suited for grazing and soil quality rehabilitation.
  - ◇ Reclamation of oil and infrastructure sites.
  - ◇ Establishing vegetation and habitat around energy development sites.
- ◆ Cost-share on:
  - ◇ Grass seeding, which may include payment during the establishment phase.
  - ◇ Installation of range infrastructure.
  - ◇ Implementation of restoration activities.
- ◆ Local contacts to implement:
  - ◇ NRCS / Soil Conservation District offices
  - ◇ Partners for Fish & Wildlife offices
  - ◇ Game & Fish Private Lands Biologists

## EXAMPLE OF GRAZING PROJECT:

- 60/40 Cost-share on fencing & water.
- Assistance with cover crop planning and grass seeding for soil quality rehabilitation.
- Payment while grass seeding gets established.
- Creation of map for infrastructure installation.
- Cultural review assistance.



## ENERGY SITE PROJECTS



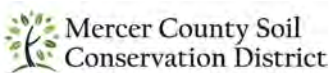
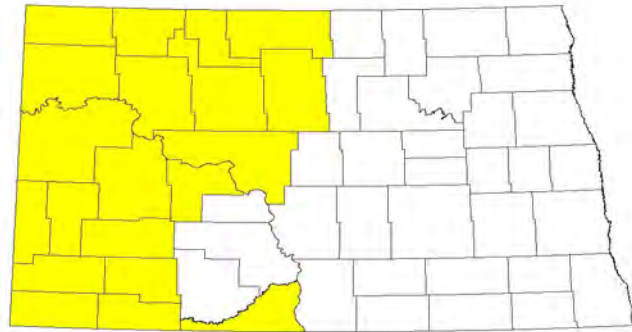
- Cost-share for vegetative cover establishment adjacent to or “square-off” well pads/energy sites.
- Reclamation of oil and infrastructure sites with assistance from the Department of Mineral Resources.
- Connecting landowners with energy industry contacts for better communication on the impacts of development.

**NORTH DAKOTA  
NATURAL RESOURCES TRUST**

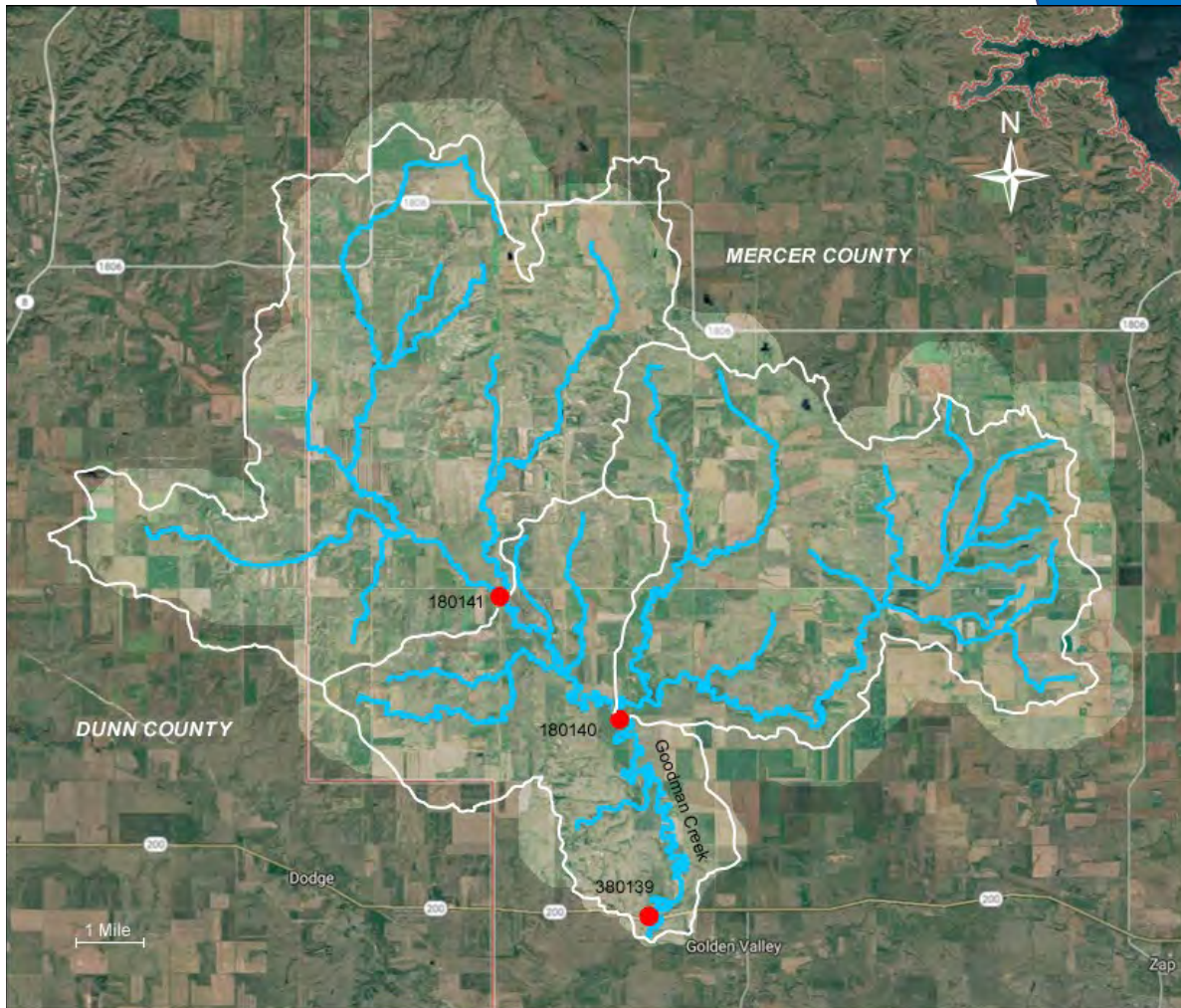
**MERCER COUNTY SOIL  
CONSERVATION DISTRICT**

1400 Hwy 49 N, Beulah  
701-873-2101 ext 3.  
mcscd@westriv.com

Project Area



# GOODMAN CREEK WATERSHED



The Mercer County Soil Conservation District is reopening the Goodman Creek watershed for 2 years. The project is active from **now until October 2021**. Any land within the project area is eligible for cost share. The cost share is **60/40%** on agriculture operation improvements, but these improvements must have some conservation benefits.

Improvements that the watershed can cost share include:

Manure Management Systems	Fencing	Pipelines	Waterways	
Wells	Tanks	Cover Crops	Grass Plantings	Tree Planting

Repaid costs are based on receipts after the improvements have been installed.

Contact us with your farm/ranch improvement ideas to start your watershed project.

mark.johannes@nd.nacdnet.net  
brian.kerns@nd.nacdnet.net

701-873-2101 ext 3

1400 Hwy 49N #102, Beulah, ND 58523



Mercer County Soil  
Conservation District